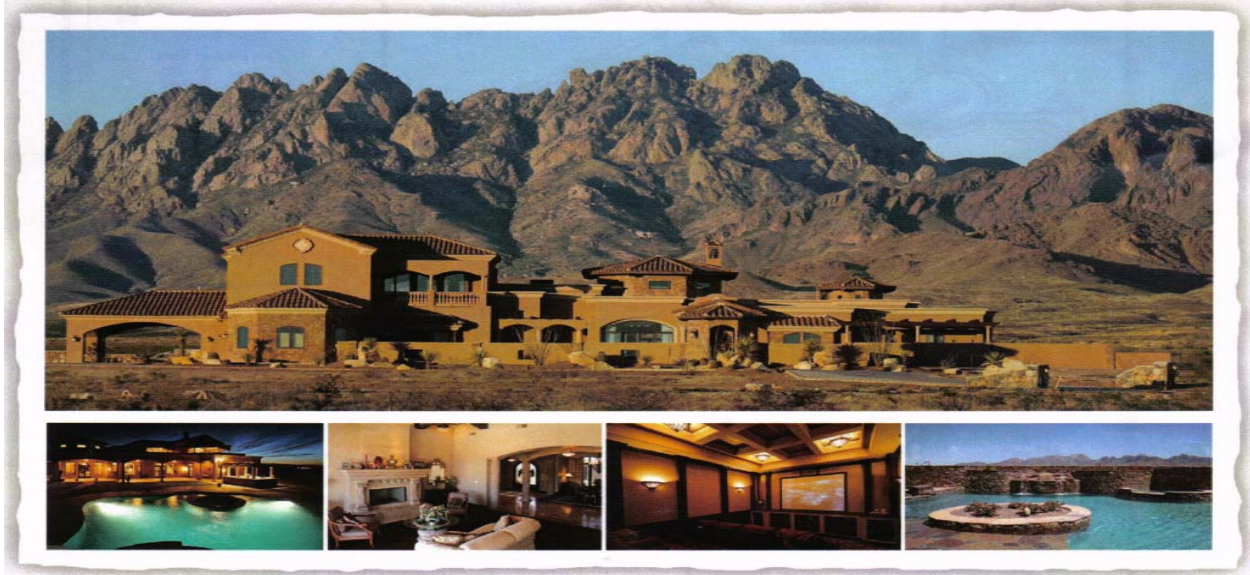


LIVE IN LUXURY  
INSIDE AND OUT



1340 Picacho Hills Drive - Las Cruces, NM 88007  
(505) 523-7441 - 1 (866) 382-8358  
www.las-cruces-custom-homes.com



## La Jolla Del Monte

New residential subdivision designed to the highest level of quality and offers breathtaking views of the Organ Mountains and the Mesilla Valley.

Estate Homesites Starting at \$170,900

Lot Availability

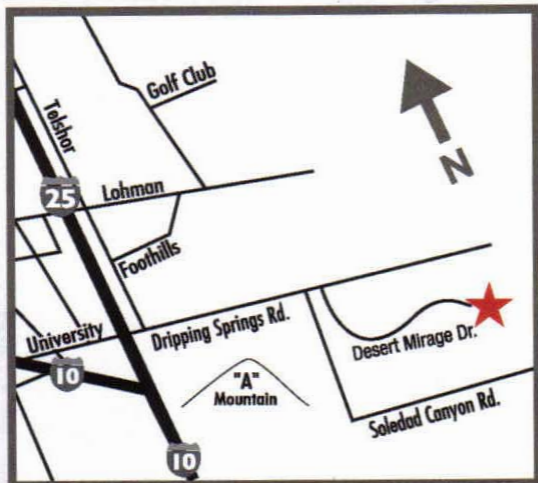
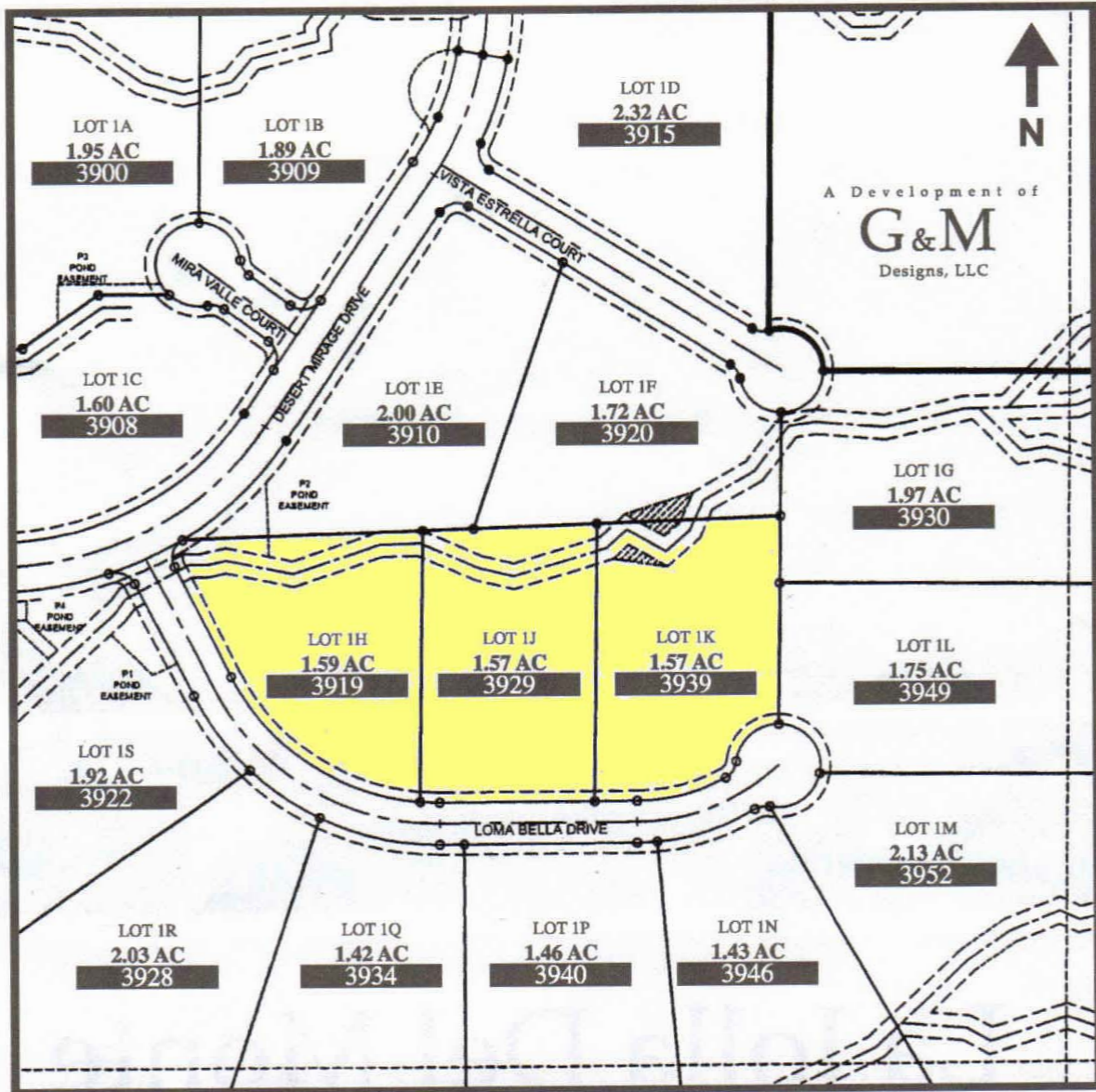
<u>Lot #</u>	<u>Acreage</u>	<u>Status</u>	<u>Price</u>
1h	1.58	Available	\$170,900
1j	1.57	Available	\$175,900
1k	1.57	Available	\$180,000
1m	2.72	<b>Sold</b>	

### Desert Sage “Build-to-Suit” Lots

Comprised of 20 acres, La Jolla del Monte is truly a gem at the base of the Organ Mountains. With 19 spacious lots, this setting offers room to let your home sprawl, taking in all of the joys of the mountains and the city lights.

# La Jolla Del Monte

## SUBDIVISION



### Directions:

3 1/2 miles East off University exit and I-25, head East on University/Dripping Springs Rd., right on Desert Mirage Drive approximately 1 mile.